

SWINDON TOWN



OFFICIAL CLUB SPONSOR



BARCLAYS DIVISION TWO

BRISTOL ROVERS

SATURDAY OCTOBER 13th 1990

KICK-OFF 3.00 p.m.

OFFICIAL PROGRAMME £1.00

**TODAY'S
MATCH SPONSOR:**
Roy Allen Supplies



GWR

FM

97.2

FIRST FOR SPORT IN WILTSHIRE

We offer the most comprehensive sports coverage in the county.

Tune to 97.2 or 102.2 MHz for updates at:

06.45 07.45 08.45 13.10 17.15

Plus our weekend coverage starting on Friday at 17.15 with the exclusive Swindon Town coverage featuring Ossie Ardiles, players and management from the County Ground.

Saturday sport is a full four hours starting at 14.00 with detailed match coverage and radio's first classified football results at 16.55.

Well done Paul & Alan

Good afternoon ladies and gentlemen, welcome once again to the County Ground.

A warm welcome to Gerry Francis and his team, indeed welcome to all connected with Bristol Rovers.

As you know Rovers have had a tough struggle this last few years in having to share Twerton Park with Bath City. To the clubs credit they have done extremely well to keep going and eventually ending up as Third Division Champions for 1989/90.

It is hoped within the near future that they will have agreed a permanent home near Bristol. We wish them well after today.

On the playing front, Paul Bodin has signed a new contract which will help ensure his future with the club and also help our long-term planning.

Congratulations also to Paul and Alan McLoughlin in once again being selected for the Welsh and Irish squads in next week's Internationals at Cardiff and Dublin.

John Buttigieg has returned to Brentford after his loan period with us. We wish John all the best for the future and pass on our thanks to Brentford F.C. for all their help.

I was delighted with our performance against Darlington. To overcome a three goal deficit is difficult

at any time but with so many of our senior professionals injured it was a matter of bleeding some of our younger players. Nicky Hammond and Adrian Viveash performed very well and it was pleasing to see that we have one or two youngsters coming along.

The cup draws have not been very kind to us this week with away draws at Chelsea and Sheffield Wednesday. However we shall go to these two famous clubs and give our best. If we keep playing football as we know how then we have nothing to fear.

Thank you for attending this afternoon's game. Please get behind the lads for what will be a very hard game.



A handwritten signature in black ink, appearing to read 'Paul Bodin', written over a white background.

WELCOME TO THE
COUNTY GROUND
-HOME OF



SWINDON TOWN
FOOTBALL CLUB

County Ground, Swindon, Wiltshire
SN1 2ED

Telephone:

(0793) 430430 (Main Office and
Commercial Department)

(0793) 611499 (Travel Club)

(0793) 535130 (Rendezvous Club)

Fax: (0793) 536170

President: C. J. Green

Chairman: G. W. Herbert

Vice Chairman: C. M. Howard

Directors: L. Smart, N. H. Arkell,

K. J. Chapman

Chief Executive: P. Day

Manager: O. C. Ardiles

Non Executive Directors:

D. Alderton, R. M. Mattick JP,

M. Z. Tryczynski

Commercial Manager: D. Buswell

Assistant Manager: P. D. Bates

Coach: A. A. Rowland

Youth Team Manager: J. Trollope

Physiotherapist: K. Morris

Hon. Medical Officer:

Dr. J. D. Nicholas

Chaplain: Rev. N. Sands

Official Club Sponsor: GWR FM

Today's Match Sponsors are:

ROY ALLEN SUPPLIES

The Directors of Swindon Town Football Club would like to express their gratitude to **Roy Allen Supplies** for their generosity in sponsoring today's match.

This is the official programme of Swindon Town Football Club. Individuals contributions do not necessarily represent the views of the club.

Edited by club staff with the valued assistance of **Paul Plowman**.

Printed by **Thamesdown Litho**

Front cover: Paul Bodin crosses in our 3-3 draw at Brighton.

Welcome to the players, officials
and supporters of

BRISTOL ROVERS



BRISTOL ROVERS - TEAM PHOTOGRAPH SEASON 1990/91

Back row left to right: Bob Bloomer, Geoff Twentyman, David Mehew, Devon White, Steve Yates, Bill Clark, Ian Hazel, Andy Reece.
Middle row left to right: Ray Kendall (Kit Manager), Vaughan Jones (Captain), Mark Hewitson, Paul Nixon, Ian Wilmott, Gavin Kelly, Brian Parkin, Marcus Browning, Adrian Boothroyd, Tony Pounder, Tony Sealy, Roy Dolling (Physiotherapist), Graham Muxworthy (Youth Coach).
Front row left to right: Phil Purnell, Ian Alexander, Ian Holloway, Gerry Francis (Manager), Des Bulpin (Reserve Team Manager), Carl Saunders, Christian McClean.

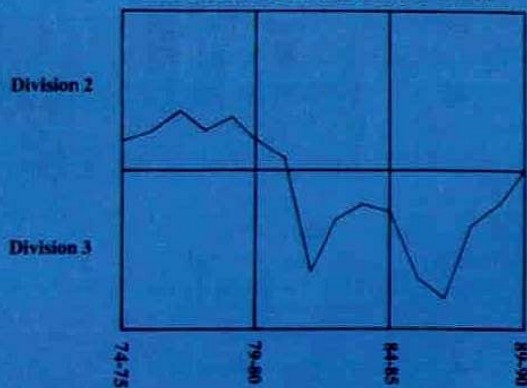
BRISTOL ROVERS - Form Guide

Matches so far this season . . .

	H	A	Goalscorers	Att.
Aug 25	Leicester City	L2-3	White, Jones	13,648
29	Torquay United	L1-2	Twentyman	2,461
Sep 1	Charlton Athletic	W2-1	White, Mehew	5,357
4	Torquay United	D1-1	Alexander	3,533
8	Wolves	D1-1	Holloway	17,917
15	Hull City	D1-1	Mehew	4,734
22	Ipswich Town	L1-2	Saunders	11,084
29	Notts County	L2-3	Saunders, Holloway	6,563
Oct 3	Blackburn R.	L1-2	White	5,110
6	Sheffied W.	L0-1		6,413

Summary of goalscorers: White 3, Holloway 2, Mehew 2, Saunders 2, Jones 1, Alexander 1, Twentyman 1.

BRISTOL ROVERS: THE LAST 15 YEARS



FM 97.2

AND SWINDON TOWN

The squad

Gerry Francis (Manager). Gerry commences his fourth season as Bristol Rovers Manager. Having joined the club initially as a non-contract player in 1985 before taking up a coaching position with Wimbledon in October 1986. The former England International Captain spent 20 seasons in professional football as a player making nearly 500 League appearances for QPR, Crystal Palace and Coventry City in the First Division. Between 1975-76 he won International honours for his country, further honours were denied him, due to a series of injuries. Francis's three seasons at Twerton Park have been quite remarkable.

With limited cash available only three players have been purchased for a total of £100,000. The club finished, his first season in charge in eighth position, qualifying for the Third Division play-off finals, losing narrowly to Port Vale in the final before last season's momentous achievements. The winning of the Third Division Championship and the club's first ever Wembley visit to contest the Leyland DAF Final. Gerry has signed another year's contract but will have to work without an assistant following Kenny Hibbitt's departure to take over the Manager's spot at Walsall.

Brian Parkin (Goalkeeper). Born Birkenhead, aged 24. Started his career with Oldham Athletic but did not become a regular choice until a move to Crewe Alexandra. After a century of League appearances Brian linked up with Crystal Palace. A brave and reliable goalkeeper, he joined Rovers in November 1987 in the deal which involved Nigel Martyn moving to Selhurst Park for £1 million. His debut for Rovers meant that Brian had experienced League football in all four divisions.

Gavin Kelly (Goalkeeper). Born Beverley, aged 21. Signed for Rovers in June 1990 after an initial loan spell at the end of last season. Made his League debut for Hull City in September 1988 but had few opportunities to establish himself with The Tigers.

Ian Alexander (Full Back). Born Glasgow, aged 27. Jock, as he is nicknamed, is currently one of Rovers longest serving players now in his fifth season with the club making over 150 League appearances since his arrival at Twerton Park. His early career was spent with Rotherham United, Motherwell and Morton before he enjoyed a brief spell in Cyprus with Pezoporikos. Originally a winger he has been converted into a very fine strong tackling attacking full back.

Vaughan Jones (Full Back). Born Tonyrefail, South Wales, aged 30. Vaughan is Rovers team captain and has missed just one League match in the last two seasons. He made his League debut for Rovers the last time Rovers were in the Second Division. Vaughan won Welsh Youth and Under-21 honours in his first spell with the club which lasted from 1976-82. He spent two seasons with Newport County and a brief spell at Cardiff City before returning to

join Rovers in March 1985. Vaughan enjoyed a very successful Testimonial season last term captaining Rovers Championship winning team and leading Rovers out at Wembley Stadium in the Leyland Daf Cup Final.

Adrian Boothroyd (Full Back). Born Bradford, aged 19. Adrian joined Rovers from Huddersfield Town in June for a £30,000 fee.

A former club trainee he made his League debut for the Yorkshire club during the end of last season impressing Rovers officials in a match between the clubs at Leeds Road. A young player who will add to Rovers squad.

Geoff Twentyman (Defender). Born Liverpool, aged 31. Popular Rovers defender who has provided valuable service at the heart of the defence in his five seasons at Twerton Park. Geoff started his career at Liverpool as a junior but drifted into non-League football with Chorley before Preston North End offered him a contract in 1983. After 100 League appearances for the Deepdale Club Geoff moved south to join Rovers. Geoff hopes to complete 200 League appearances for Rovers during the season.

Steve Yates (Defender). Born Bristol, aged 20. Very promising defender who made his League debut as a 17 year old trainee. Established himself in Rovers first team two seasons ago and has been voted by the club supporters as the Young Player of the Year twice during that period.

Billy Clark (Defender). Born Bournemouth, aged 23. Spent all of last season out of action due to a serious injury from which he has hopefully recovered to enable Billy to resume his career. He commenced his career at Bournemouth in 1984 before signing for Rovers in January 1988 for a fee of £10,000.

Ian Willmott (Defender). Born Bristol, aged 22. A late entrant into professional football, Ian signed initially for Rovers in January 1989 after joining the club from Weston-Super-Mare. Can play at full back or as a winger. Made his League debut on the opening day of last season.

Ian Holloway (Midfield). Born Bristol, aged 27. Rovers creative mid-fielder who enjoyed an excellent season as the club won the Third Division Championship. Ian was voted the clubs player of the year, he did not miss a single match, scoring several important goals in the process. Ian has made over 250 League matches for the club which covers two spells. He experienced spells at Wimbledon, Brentford and Torquay (loan).

Andy Reece (Midfield). Born Shrewsbury, aged 27. Andy joined Rovers in August 1987 being one of Gerry Francis's first signings. He made his League debut within weeks of joining the club and has remained a regular ever since. His early career was spent with Walsall as an apprentice before having spells with Worcester, Dudley and Willenhall.

Ian Hazel (Midfield). Born Wimbledon, aged 22. Spent a loan spell with Rovers in February

1989, joining them permanently last summer from Wimbledon. Has yet to establish himself in Rovers first team but is considered to be a valuable squad player.

Mark Hewitson (Midfield). Born Oxford, aged 19. A summer signing from Oxford United who released him after one season as a professional.

Phil Purnell (Winger). Born Bristol, aged 25. Now in his fifth season after joining the club initially as a part-timer from Mangotsfield United in July 1986. Missed the first half of last season due to injury but regained his place in a successful finale which saw promotion achieved and a Wembley final played in.

David Mehew (Midfield). Born Camberley, aged 22. David was Rovers's top goalscorer last season with 21 goals. A consistent goalscorer who joined Rovers in July 1985 after being released by Leeds United. David had brief loan spells with Trowbridge and Bath City two seasons ago.

Devon White (Striker). Born Nottingham, aged 26. A towering all-action player whose role in Rovers's team has been significant since he joined the club in August 1987. A former Lincoln City player, Devon experienced non-League football with Arnold and Boston before returning to full-time football, an opportunity he has relished.

Tony Sealy (Striker). Born London, aged 30. Experienced campaigner who has played in all the top three Divisions for such clubs as Southampton, Crystal Palace, QPR, Fulham, Leicester City and Brentford. Joined Rovers last summer after a brief spell in Portugal with Sporting Lisbon and Braga.

Paul Nixon (Midfield/Striker). Born Seaham, aged 26. Paul joined Rovers in January 1989 following a part-time career in New Zealand where he played for Gisborne. He won International honours for his adopted country but wished to return to his native country to have the opportunity to play as a full-time professional.

Christian McLean (Striker). Born Colchester, aged 26. Chris joined Rovers in March 1988 from Clacton but much of his career has been confined to appearances as substitute. An effective replacement for fellow striker Devon White. Chris scored several important goals last season. A former Colchester apprentice.

Marcus Browning (Striker). Born Bristol, aged 19. A former youth trainee, Marcus has been with Rovers since he was 14. A regular goalscorer in Youth and Reserve team football. He made his League debut last season against Bolton Wanderers after coming on as substitute.

Carl Saunders (Striker). Born Marston Green, Birmingham, aged 25. An experienced player who made over 150 appearances for Stoke City who he joined in 1983, many of which were in the First and Second Divisions. Carl joined Rovers in February 1990 for a £70,000 fee.

Bob Bloomer (Utility). Born Sheffield, aged 24. Bob joined Rovers in March 1990 from Chesterfield for a fee of £20,000. He spent five years with the Saltergate club playing at full back, midfield and as a striker. Made over a century of League appearances with Chesterfield.

Tony Pounder (Winger). Born Yeovil, Somerset, aged 24. Tony signed for Rovers from Weymouth in July 1990. Started with Westland Sports when he left school, then played for Somerset County. He then joined Weymouth in 1988.

GWR FM 97.2

THE WINNING COMBINATION

PAUL PLOWMAN continues his season by season look back at Swindon Town through the years.

1964/65

There can be no better start to a season than a first minute goal in the first game, especially when it comes in an away game!

But Bill Atkins did that, at Bury, in August 1964. Unfortunately for the Town, the home side equalised within sixty seconds and goalkeeper Norman Oakley broke a leg in trying to prevent it. Swindon were 4-1 down by half-time and eventually conceded six – three of them to future England star Colin Bell.

Waiting to pull on the green jersey was Tony Hicks, just 19, and fresh from the Town's youth team that had battled to the final of the F.A. Youth Cup in the April. Tony's only previous first team outing had



*Don Rogers
Maximum appearances
in 1964-65*

been in a League Cup tie against Southend a year earlier.

The youngster was able to keep a clean sheet in his first two games, but the tide soon turned and five of the next six ended in defeat, with 16 goals conceded. Oakley was fit to resume following a 5-0 humbling at Fratton Park, where Pompey scored all their goals during the first 33 minutes.

A third keeper appeared briefly during 1964/65, Frank Haffey. Signed 26 years ago this week, Haffey's claim to fame had been as Scotland's number one in the 9-3 defeat by England at Wembley in 1961. After just four appearances for Swindon, he went to Australia and took up singing as a profession!

Two forwards who made their Town debuts in November were rather more successful, though not immediately. Dennis Brown and Keith East both appeared for the first time in a 4-1 reverse at Middlesbrough. East, at just £200 from Portsmouth, scored the goal. Brown, who cost £15,000, hit a hat-trick at Leyton Orient in his fifth game.

Following an early F.A. Cup exit at the hands of Ipswich, Swindon won only four more times and slowly descended towards the relegation zone. And they were without the inspiration of inside-forward 'Ernie' Hunt for six of the last seven matches. The Town failed to win any of them.



By the final weekend of the season, it was a desperate battle for survival, with the Town needing to win at Southampton to be certain of staying up. The Saints were a goal up inside two minutes and it proved too tall an order for Swindon as they went down 2-1.

The Football League somehow managed to allow rivals Portsmouth – with an inferior goal average to Swindon – to kick off in the evening, knowing that they needed only one point to save themselves. Nothing seems to have changed.

**NEXT WEEK –
Back to the Third Division
and our first meetings with
Oxford United**

ARKELL'S

EST. **BREWERY** 1843



ARKELL'S
KINGSDOWN
ALE

ARKELL'S
3B
BEST BITTER
BEER

ARKELL'S
2B
BITTER
BEER



ARKELL'S ALE

ARKELL'S
BREWERY

League Records . . .

Liverpool top the First Division – nothing new in that – and they're heading for Tottenham's record of successive victories at the start of the season. Even Spur's achievement has been surpassed – Reading notched up 13 straight wins at the beginning of the 1985/86 campaign. There are many more records associated with the Football League, which celebrated its centenary in 1987/88.

The "Anfield machine" has collected three titles on the trot, previously only obtained by Huddersfield in the 1920's and Arsenal a decade later. Highbury is still very much a force to be reckoned with – but Leeds Road no longer fills visitors with fear.

Brian Clough's Nottingham Forest in 1977-78 and 1978-79 clocked an unbeaten sequence of 42 matches, 21 wins + 21 draws in the days of John McGovern, Gary Birtles and John Robertson (if memory serves me correctly) whereas Cambridge (relative newcomers to the competition) went 31 fixtures without a win in the early eighties, suffering 21 defeats and ten draws.

The longest winning period (not necessarily from the off) is 14 matches from Manchester United, Bristol City and Preston North End. The losing equivalent is Rochdale's 17 outings in 1932-32 in Division Three North. That regional series also produced the game with the greatest number of

goals – 17 – Tranmere 13, Oldham 4.

Highest individual score is also unlucky for some: Newcastle 13, Newport 0 and Stockport 13, Halifax 0.

Most goals for an individual is an honour for Joe Payne. The Luton player struck ten against Bristol Rovers(!) on April 13th 1936. Who knows about this afternoon?

Swindon have their own claim to fame – the Town's 102 points in their Fourth Division Championship-winning season is a record under the "three-for-a-win" system. Much of that team has moved on – Kenny Allan, Charlie Henry and Brian Wade, who's just joined up at Brighton on a month's loan.

In "old money" nobody will ever better Lincoln's tally of 74. I think Graham Taylor was manager – he's moved on too!

Peterborough had scored the most goals in a season – 134 – Dixie Deans alone was on target 60 times in 1927-28, for Everton when heading the ball left the mark of its laces in your forehead.

More recently Norwich and Exeter each had 23 draws in one season. The highest-scoring drawn games shared 12 goals between Leicester and Arsenal and Charlton and Middlesbrough in 1930 and 1960 respectively. Who knows what will happen before the end of this year?

Between March and August 1979, Steve Death, from Reading, kept a clean sheet for

SHAUN HODGETTS OF GWR FM WITH HIS "IN-DEPTH" LOOK AT THE FOOTBALL SCENE



1103 minutes – nothing passed him between the posts.

The biggest League gate, to see Arsenal v. Manchester United at City's Maine Road ground, was 83,260, the likes of which we're never likely to witness again.

We started with Liverpool, they also boast an 85 game run of being unbeaten at home between January 1978 and January 1981.

Let's end with apologies for supporters who haven't forgiven the Football League for their decisions of June 1990 – those ups and downs must also be a record of some sort, and not a ball was kicked!!

LEMON & CO

SOLICITORS

*A SUBSTANTIAL PRACTICE ABLE TO
PROVIDE ADVICE & HELP IN ALL
ASPECTS OF COMMERCIAL & PRIVATE LIFE
AND INCLUDING A FRIENDLY, THOROUGH
AND PROFESSIONAL CONVEYANCING
SERVICE*

Richard Fry, Timothy Dixon, Deirdre Moss
34 Regent Circus
Swindon SN1 1PY
Tel: SWINDON 527141
FAX: SWINDON 614168

Martin Evans, Stephen Moss
148 High Street
Wotton Bassett SN4 7AB
Tel: SWINDON 853665
Fax: SWINDON 850324

Richard Challis, David Halfhead
1 Little London Court
Old Town, Swindon SN1 3HY
Tel: SWINDON 527141
Fax: SWINDON 511639

SWINDON T O W N

CLUBCALL

0898 12 16 40

AVAILABLE FROM ANYWHERE IN THE U.K.
7 DAYS A WEEK 52 WEEKS A YEAR

SWINDON ***CLUBCALL***

Calls cost 33p/minute cheap; 44p/minute other times.

BT Supercall, 1-9 Downham Road, London N1 5AA.

 SUPERCALL

News and Views

THE BIPLOB TANDOORI

Man of the Match

v.

Millwall



David Kerslake

v.

Darlington



Shaun Close

Congratulations to Dave and Shaun, who receive the prizes of meals for two at the Biplob Tandoorts Restaurant, Wood Street, Swindon.

CHELTENHAM 1990

The Swindon Town Hurdle Race took place at Cheltenham on Thursday 4th October. Sponsored by the club, it was won by the favourite, Falshaan, ridden by Champion Jockey Peter Scudamore and trained by Martin Pipe, the Champion Trainer. As usual, a large contingent of Town fans were present and Cheltenham's hospitality was as good as ever.

Michelle has retired on her winnings of £450.00!!

PROGRAMME SUBSCRIPTION

1990/91

If you require a match programme, home or away, why not take advantage of our programme subscription scheme?

Have your programme sent to you each week.

For further details and costs of the scheme please contact The Commercial Department, Swindon Town F.C., County Ground, Swindon or ring (0793) 430430.

VIDEOS

Swindon Town v Sunderland

Wembley 28th May 1990

Play-Off Final

Videos still available exclusively from The Commercial Department, Swindon Town F.C., County Ground, Swindon.

Price £20.00, postage and packing £1.25 extra or can be collected.

Videos of all home matches area also available from The Commercial Department. Price £11.50 plus £1.25 postage and packing or can be collected.

SPORTING DINNER

Our next Sporting Dinner will be held on Monday, 3rd December 1990 at South Marston County Club

Guest speaker to be announced.

Tickets £17.50 available from The Commercial Department, Swindon Town F.C., County Ground, Swindon.

THE RUMBELOWS

Man of the Match

v.

Darlington

was

Micky Hazard



Micky was selected Man of the Match by our supporters in the Disabled Enclosure. Jack Taylor of Chippenham, a regular supporter of many years, will also receive an award.

Our thanks to Rumbelows and also Mr. and Mrs. Fisher in organising the selection on behalf of our friends from the Disabled Enclosure.

**NO WORRY,
NO DRIVING.
JUST TURN UP!**

An
Executive Coach Trip
to
Sheffield Wednesday
on
October 30th/31st 1990
£40.00

to include:
Executive Coach Travel
Ticket to Match
Match Programme
Buffet outward bound
Dinner on return
Tips
Competition
and **no extras.**

Interested?
Ring (0793) 430430 ext 210/211
for reservations.
If there is not sufficient interest the trip will not take place.

GWR FM 97.2

**CALL THE RADIO LINE FOR THE
LATEST SPORTS NEWS 24 HOURS A DAY
ON 0898 333000**

Calls charged at 38p/min peak/25p/min all other times

BETTER BUY BURMAH

Burmah Petroleum Fuels Limited
is proud to support Swindon
Town Football Club and offers a
warm welcome to all supporters
at:

Swindon Autopoint
Marlborough Road, Swindon

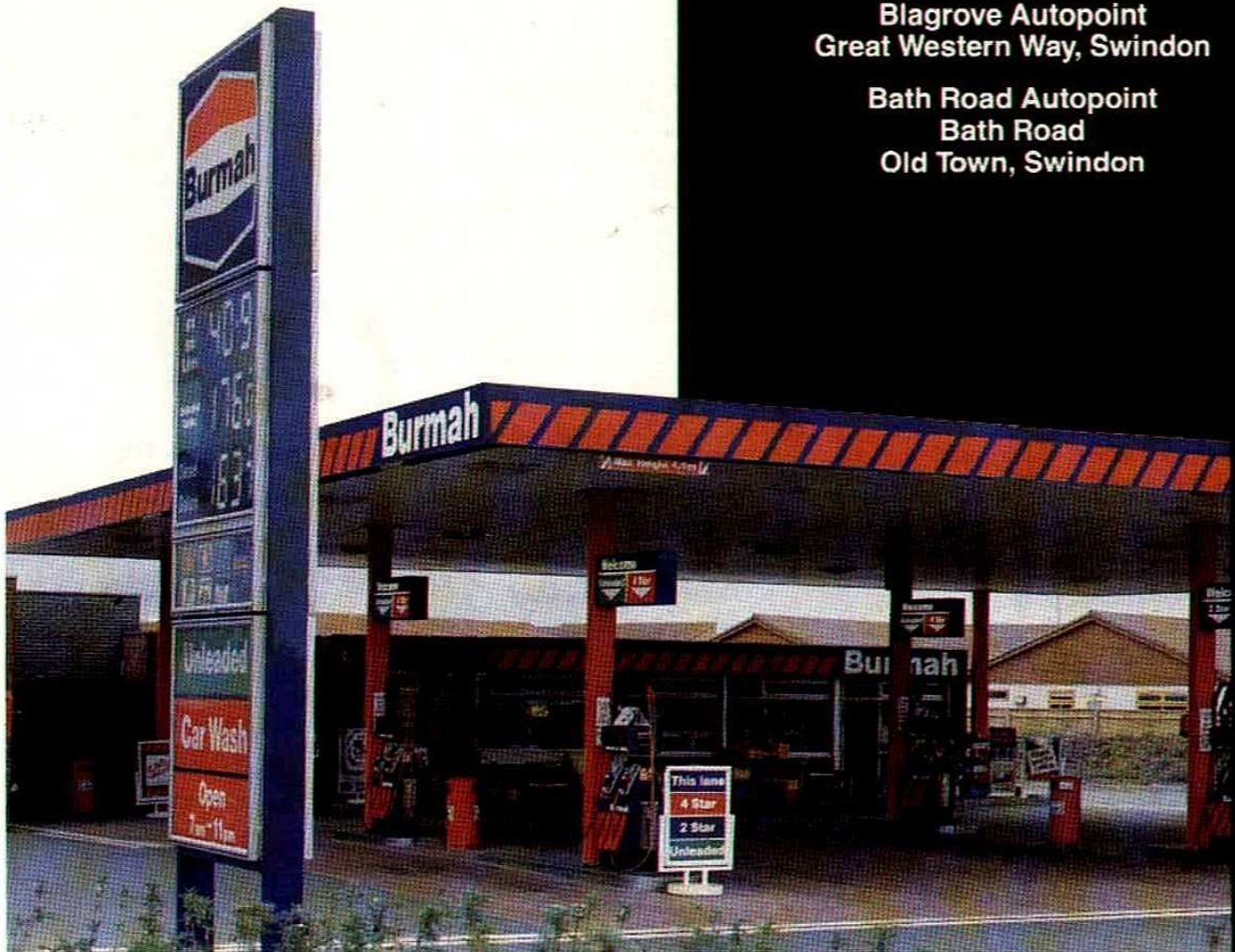
Newport Street Autopoint
Newport Street
Old Town, Swindon

Stratton Autopoint
67 Bridgend Road
Stratton St Margaret, Swindon

St. Margarets Garage
Highworth Road
Stratton St. Margaret, Swindon

Blagrove Autopoint
Great Western Way, Swindon

Bath Road Autopoint
Bath Road
Old Town, Swindon



*Look out for the Burmah
Footballs kicked into the
crowd at every home match!*



Injury problems . . .

Last weekend's painful injury to Fraser Digby has opened up a well-deserved chink of first-team daylight to Nicky Hammond.

Nicky has earned his chance. He is a model professional and has awaited his present opportunity with dignified patience.

Nicky won the "Keeper of The Week" award at Bob Wilson's first-ever School of Goalkeeping at Trent Park, Barnet, eight years ago.

The school has been a great success. Bob runs a one-day course every Sunday from February onwards, while the full-length courses are at Easter and during the summer.

Nicky helps him to coach and demonstrate techniques to the youngsters who look up to him with the respect he deserves.

Bob himself works far too hard for his own good. As well as presenting "Breakfast Time Sport", three days a week, which entails arriving at Lime Grove studios long before George Best has thought about going to bed, he covers plenty of ground to prepare his "Football Focus" feature for "Grandstand".

On top of this he coaches goal-keeping aspirants at Arsenal and Q.P.R.

Bob and I shared an office for a number of years at B.B.C. TV, and although we are friends, Bob always seemed to wince as he walked past my full-sized team photographs of Swindon Town F.C.

The memory of Donald Rogers shimmering past him for goal number three on March 15th, 1969, still gives the former Arsenal keeper nightmares, I suspect.

As for Fraser, he has my deepest sympathies.

Fraser is suffering from a strain to the adductor tendon in his groin, which is not only extremely uncomfortable – it also entails exceptionally painful physiotherapy.

I know this from personal experience. I had the misfortune to do damage to the same area playing cricket for the Lords Taverners in May this year.

Instead of addressing the problem, I continued to aggravate it throughout the summer and now suffer from tendonitis.

I feel that Fraser faces many uncomfortable hours at the hands of Kevin Morris.

The unfortunate injury to Duncan Shearer opens the way for an up-front combination of Steve White and Fitzroy Simpson, which a number of supporters have been weighing up since Fitzroy moved into the striker's role so successfully last month.

These notes were written (owing to my trip to Ireland) before the Darlington second leg. Pray God that both players remain uninjured by the time they appear. At present it only appears a 50/50 chance!

One of the benefits of Division Two status is that we are spared playing any League fixtures in Wales.

The Severn Bridge has become a nightmare area.

Last weekend, road works and/or gale-force winds caused the Bridge to be reduced to one lane in each direction. The result, with racing at Chepstow and Wales v. Barbarians at Cardiff Arms Park, was chaos. It took three hours to travel from the M5 turn-off to the far side of the Bridge.

On Friday horseboxes travelling to Chepstow were delayed for up to four hours and on Saturday morning were turned round and re-directed via the M5 and M50.

My broadcasting colleagues Richard Pitman and John Hamner, leaving Challow at 10.30, found themselves enmeshed in the type of snarl-up that normally only Freddie Head can find.

Eventually John, the driver, took the kamikaze option and fired

JOURNALIST, RACING COMMENTATOR AND SWINDON TOWN FAN JULIAN WILSON GIVES HIS PERSONAL VIEW



Julian Wilson

down the hard shoulder. Result – £32.00 fine and three penalty points. But the boys did arrive in time (just!).

It was the wind that helped beat my beloved Pontenuovo in the Cambridgeshire. Without lateral shelter from the wind, he was blown half-way across the course – bang into the slowest ground!

Racing on Sunday was no more agreeable. I had a firm belief that the French-trained colt Saumarez would win the Prix de l'Arc de Triomphe.

I telephone Chic Bates on Sunday morning to inform him of this, and recommend that he take the 20/1 offered by William Hill.

He didn't. Nor did I. We both hoped that Salsabil would win for England. There are times when patriotism can be taken too far.

McLEAN HOMES. BUILDING FOR EVERYONE'S FUTURE

McLean's superbly built homes are ideal for
the 1990s.

Whether it's a 1-bed starter apartment, or a
magnificent 4-bed executive home, the quality
is outstanding.

And we'll keep building for everyone's future,
right into the 21st century.

McLean
CREATIVE BUILDERS

McLean Homes South West Limited, Omicron, Windmill Hill Business Centre,
Swindon, Wilts. SN5 9YU. Tel: (0793) 874700.



WALKER JACKSON



Get a fresh start to motoring this season



ALL PRICES ARE INCLUSIVE OF VAT

Check Ford First.



A 4.546 LITRE CAN 10/30, 20/50, OR 15/40 SF/CD MULTIGRADE FORD OIL PLUS FILTER TO FIT FORD KL, OHC, BL AND V ENGINES, ALSO SOME ALFA-ROMEO, FIAT, LADA, LANCIA, PEUGEOT, RELIANT, RENAULT, SAAB, TALBOT, TOYOTA AND VOLVO ENGINES

TECHNOLOGY TELLS... NEW SUPER COPPER CORE SPARK PLUGS FROM MOTORCRAFT

£4.00

(SET OF 4 - INCLUDING VAT)



£6.50

INC. VAT



OPEN ALL DAY SATURDAY

ALL PRICES INCLUDE VAT



Walker Jackson & Co. Limited
CAR PARTS
Marlborough Road
Tel: Swindon 695702

Walker Jackson & Co. Limited
VAN AND TRUCK PARTS
Coped Hall, Wootton Bassett
Tel: Swindon 850225

PARTS CENTRE
OPEN SIX DAYS A WEEK
Monday to Friday
8 am - 6 pm
Saturday 8.30 am - 5 pm
PARTS CENTRE
OPEN SIX DAYS A WEEK
Monday to Friday
8.30 am - 6.30 pm
Saturday 8.30 am - 3.30 pm

TICKET OFFICE

West Ham United – Saturday 20th October 1990

This match will be **ALL TICKET FOR WEST HAM UNITED SUPPORTERS ONLY.**
Visiting supporters will be positions in **THE TOWN END (SEATING)**
and **THE WEDGE (TERRACING).**

(No tickets will be sold to West Ham supporters on the day of the game).

Sheffield Wednesday – Tuesday 30th/Wednesday 31st October 1990

Rumbelows Cup, Round Three

Ticket details to follow.

**ALL CURRENT SEASON TICKET HOLDERS IN THE WEDGE ARE ASKED
TO CONTACT THE TICKET OFFICE**

TICKETS FOR HOME SUPPORTERS

North Stand seats are available to Members from Ticket Office during normal office hours
Monday – Friday 9.00 a.m. – 5.00 p.m.

POLICE NOTICE

Unacceptable/Distruptive Behaviour Shrivenham Road Terrace/Stratton Bank End

There is a vociferous minority of youths in this Section of the Terraces whose behaviour I have filmed since the start of the Season. Their behaviour is not acceptabel to the Club, its genuine Supporters and the Police.

If this behaviour does not improve, those responsible will be ejected from the County Ground, their Membership Cards seized and they will be banned from attending football for the remainder of this Season.

I hope it does not come to ejections and those youths responsible behave. We have a good record here at the County Ground and I do not intend it to be spoilt by stupid behaviour.

'Ernie' WISE
Football Intelligence Officer

YOUTH TEAM

Forthcoming matches

Midland Youth Cup

Swindon Town v Shrewsbury Town

Monday 22nd October 1990

Kick-Off 7.00 p.m.

Admission prices:

North Stand (Adults) £1.50
(Children) £1.00
(O.A.P.) £1.00



Top: Jon Gittens and Alan McLoughlin in action at Brighton.

Bottom: Town mascot Paul Etheridge and Darlington Mascot Ross Atkinson before the kick-off at the County Ground in the Swindon v Darlington match.



AKERS GARAGE LTD.

MAIN VAUXHALL CAR AND LIGHT COMMERCIAL DEALER

VAUXHALL - VAUXHALL - VAUXHALL - VAUXHALL

VAUXHALL - VAUXHALL - VAUXHALL - VAUXHALL

CAR/VAN SALES NEW & USED
Service Department M.O.T. Testing Station
BODY & PAINT REPAIR SHOP
Genuine Vauxhall Spares
SELECTION QUALITY USED VEHICLES

AKERS

YOUR LOCAL VAUXHALL CAR AND LIGHT COMMERCIAL DEALER
THE STREET, MOREDON, SWINDON SN2 3ES
Tel: (0793) 523457/8/9



VAUXHALL

SERVICE - PARTS - SALES - SERVICE - PARTS - SALES - SERVICE - PARTS - SALES - SERVICE



SILVER KNIGHT

THREE LEVELS OF SERVICE
TO CATER FOR ALL NEEDS

- ★ VIP EXECUTIVE ★
- ★ LUXURY ★
- ★ GENERAL/CONTRACT ★

UK and CONTINENTAL CHARTER for BUSINESS and PLEASURE

All Silver Knight Coaches are of a high standard
You will receive the same efficiency whichever you choose

For our VIP/Executive service,
our drivers wear tailormade suits to fit the occasion

Your comfort will be guaranteed with
Reclining Seats - Curtains - Tables - Toilet/Washroom - Hot/Cold Drinks
Fridge - Servery/Bar - Video - Telephone - Hostess/Guide

Silver Knight Coaches Ltd., Christian Malford, Chippenham, Wilts. SN14 5BH
Telephone: (0249) 720360

FOR COACH TRAVEL SUPREMACY

Match & Ball Sponsors

Date	Opponents	Match Sponsor	Ball Sponsor
Tues. Sept. 28	Ipswich Town	Redman Sheet Metal	Hinders of Ermin Street. Swindon 824725
Sun. Sept. 2	Bristol City	The Plumb Center	Dave Smith. A Town Fanatic.
Sat. Sept. 15	Middlesbrough	Crosby Doors Ltd.	Peter Godwin. An ex-Swindonian now residing in Harrow
Tues. Sept. 18	Wolverhampton W.	M.S. Group, Swindon	Blunsdon House Hotel
Sun. Sept. 30	Millwall	Metalite Engineering	Mr. A. Raynor. Uni Mill Engineering
Tues. Oct. 9	Darlington	Blunsdon House Hotel	
Sat. Oct. 13	Bristol Rovers	Roy Allen Supplies	Hammond Construction, Highworth. Swindon 766112
Sat. Oct. 20	West Ham United	Arkells, Kingsdown	
Sat. Nov. 3	Port Vale	Clarion Shoji (UK)	Mr. J. Tremlin, Coped Hall Service Station
Sat. Nov. 10	Portsmouth	Multi Agg Quarries	Travers Morgan & Partners, Consulting Engineers
Sat. Dec. 1	Blackburn Rovers	Mr. Clive Sharples	Data Call Systems Ltd. 78/86 Pennywell Road. Bristol BS5 0TR
Sat. Dec. 15	Charlton Athletic	McLean Homes	Hayman & Partners, Swindon
Sat. Dec. 22	West Bromwich Albion	Swindon Calor Gas	Flow Forms Ltd. (Wiltshire) Ltd.
Tues. Jan. 1	Plymouth Argyle	John Coyle Services	Cliff Jones. Wessex Conservatories
Sat. Jan. 19	Hull City	Colson Engineering	The Peter Allen Traditional Jazz Band
Sat. Feb. 9	Oxford United	Oxford and Swindon Co-Operative Society	Mr. Gerry Williams. Ring Cafe. Cavendish Square
Sat. Feb. 16	Sheffield Wed.	Heywood Insurance	Wilson Tool International Ltd. Calne Town F.C.
Sat. Mar. 9	Notts. County		Emery McLaven Orr
Tues. Mar. 12	Oldham Athletic	Action Plant Hire	
Sat. Mar. 23	Brighton & H.A.	Skurrays Ltd. of Swindon	Mr. Paul Plowman
Sat. Mar. 30	Newcastle United	Hammond Construction	Brize Norton Garages, Carterton
Sat. Apr. 6	Watford	F. Green & Sons	Mr. Piper & Friends, Swiss Chalet
Sat. Apr. 27	Leicester City	McLean Homes Ltd.	Baker Bros. Builders, Lambourne
Sat. May 4	Barnsley	Clarion Shoji Ltd.	Titcombe Garages. 24 Hour Breakdown Service. Swindon 641643

WAS IT A DREAM?

If you wondered whether our play-off victory over Sunderland was a dream, then why not buy the souvenir colour video of the match, called *A Day to Remember*. It's available now for £20 if collected (£1.25 extra for postage and packaging) and also includes scenes from the players' open top bus ride through the town.

Full colour videos of all home matches are also available and cost £11.50 if collected (£1.25 extra for postage and packaging).

The videos can be obtained from the Commercial Office, at the back of the Town End.

On the road to Barnsley

Saturday October 27th 1990

Kick-Off 3.00 p.m.

Route

Proceed to M1 via usual Oxford A420 route. Follow M1 to Junction 36, proceed into Barnsley on A61.

The Oakwell Ground is situated in Grove Street, which is off of Pontefract Road.

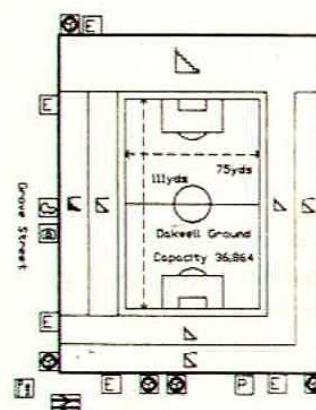
Parking Information

Official car parks for 1,200 vehicles next to the ground.

Visitors use the Queens Ground car park.

Nearest Railway Station is the Exchange Station, Barnsley.

Plan of Oakwell Ground



GWR FM 97.2

THE INFORMATION STATION

Match Action



Top: Jon Gittens celebrates the Town's second against Darlington.

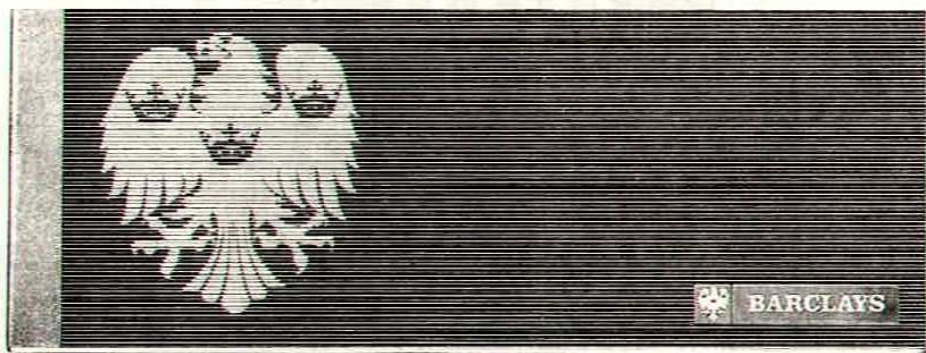
Bottom: Alan McLoughlin scores the fourth and winning goal.



GWR FM 97.2

FIRST FOR SPORT

PENALTIES?
YOU WON'T
GET ANY
AT BARCLAYS.



With The Barclays Bank Account you won't be charged for everyday transactions like cheques, credits and standing orders.

It has three options, two of which pay interest, and you can simply switch between them as your needs change.

Call into your local Barclays branch for further details. The Barclays Bank Account, in a league of its own.



THE BARCLAYS BANK ACCOUNT IS A CURRENT ACCOUNT FOR PERSONAL CUSTOMERS. AN OVERDRAFT FACILITY IS ONLY AVAILABLE ON APPLICATION. INTEREST RATES MAY VARY. WRITTEN DETAILS ARE AVAILABLE FROM BARCLAYS BANK PLC, PERSONAL SECTOR MARKETING, JUXON HOUSE, 94 ST. PAUL'S CHURCHYARD, LONDON EC4M 8EH. MEMBER OF IMRO.

OVER 100 CARS TO
CHOOSE FROM - LATEST
MODELS AVAILABLE,
SALOONS, HATCHBACKS,
ESTATES, AUTOMATIC,
SPORTS, PRESTIGE CARS

- RADIOS
- CHILDSEATS
- ROOF RACKS
- & TOW BARS

SPECIAL DISCOUNTS FOR LONG TERM HIRE

DELUXE CAR HIRE

FULL AA RELAY
COVER

NO MILEAGE
CHARGE

DELIVERY &
COLLECTION
AVAILABLE



AFTER HOURS
SWINDON
531205

11 MARLBOROUGH RD, SWINDON

NO HIDDEN EXTRAS
WE QUOTE ALL IN
PRICES

OPEN 7 DAYS A WEEK

SWINDON 644996



BAMPTONS



STRATTON ROAD,
SWINDON,
WILTSHIRE.

TEL: (0793) 35547/8/9

MOTOR VEHICLE ACCIDENT REPAIR SPECIALISTS

Approved by Major Insurance Companies



Motor
Agents Association

TALK OF THE TOWN PROMOTIONS

Congratulations to the following purchasers of our Cash 'n' Carry Sweepstake tickets; eaching having won £1,000 for just 50p

Wayne Porter, Pinehurst, Swindon
Mrs. Metcalfe, Marlborough
Mr. Gutierrez, Walcot, Swindon
Mrs. J. B. Bailey, Swindon
Mr. R. Fowler, Stratton, Swindon

Other major prize winners of T.V. sets, Debenhams vouchers and £100 cheques live in Swindon, Marlborough, Trowbridge, Chippenham, Calne, Great Shefford and Faringdon.

The Cash 'n' Carry Sweepstake tickets know no boundaries and, due to increasing popularity, new agents are needed in all areas. Contact Dave Hollister, the Promotions Manager, **NOW** and earn that much-needed extra cash for Christmas.

★ ★ ★ ★ ★ ★ ★ ★ ★ ★ ★ ★ ★ ★

WATCH OUT FOR THE NEW STRIKER

In the next few weeks, a new Cash 'n' Carry ticket is being launched. It will be known as the Talk of the Town Striker. The top prize will also be £1,000 and a brand new range of soft toys are included amongst the smaller prizes. Full details will be announced nearer the launch date. So look out for this splendid new ticket. **HARD CASH** and **SOFT TOYS** means a Happy Christmas for both parents and children.



The Man of the Match Award against Darlington was presented to Micky Hazard by Mr John Clifford, Director of the match sponsors Blunsdon House Hotel.

TRAVEL CLUB NEWS

The Travel Club is now taking bookings for Leicester, Barnsley and Sheffield Wednesday, please book as early as possible.

The Travel Club is continuing to grow, with new members joining weekly.

We are pleased to inform you that Colin the Computer has been speeded up to 30 seconds a ticket so that the queues should be much shorter than of late for bookings.

We apologise for any inconvenience caused to members during the alterations in the Travel Club Office. An urgent meeting is being sought with Mr. Day to rectify the position of the siting of the Travel Club Office. Members will be informed of the position as soon as possible.

The Travel Club is running a competition this season for the Away Player of the Season. The winner will be presented with a trophy at the end of the season. This trophy will be called **The Official Travel Club** Away Player of the Season Award. Travel Club members will cast their votes on the return journeys of every away match.

All Travel Club members wish Colin Calderwood and Dave Bennett speedy recoveries.

JUNIOR ROBINS NOTES

Last week the Junior Robins had an extremely enjoyable visit to Brighton as guests of the Junior Seagulls.

We found that Brighton could only field one team in the morning so everybody on the trip played part of a game. The fact that we won 9-1 mattered little given the spirit in which the game was played and special congratulations go to Simon Futchter who won the man of the match award.

In the afternoon we saw an exciting game viewed from the Brighton family enclosure seeing Alan McLoughlin's first goal from close range.

Our grateful thanks go to Brighton and to Mike Lewis and the Travel Club for making the visit possible.

★ ★ ★

Today we welcome the Junior Pirates and hope all involved will enjoy their day. On behalf of the teams can I say a special thank you to all those ladies who helped to prepare the lunchtime buffet.

**YOU SUPPLY THE TALENT
MITRE SUPPLY THE REST !**



 **mitre**
F O O T B A L L



MITRE ARE THE SOLE MANUFACTURER & SUPPLIER TO THE ENGLISH FOOTBALL LEAGUE
OF THE EXCLUSIVE DELTA DESIGN OFFICIAL MATCH BALL.

Kit Sponsors

FRASER DIGBY

Mr and Mrs Fisher, Birdcombe Walk, Swindon
Mrs Chilcott, 34 Ash Walk, Warminster
The Brown Family, Carterton
Alexander Independent Financial Advisors
S.T.F.C. Skittles Team, Top Cue, Stonehouse

NICKY HAMMOND

Modular Marquees
(06667) 246
and
Mr Jonathan Powell

DAVE BENNETT

Mr and Mrs Tucker of Seend
Mr Piper and Friends, Swiss Chalet
Mr and Mrs Fisher, Birdcome Walk
Bryant School of Motoring: 823421
Colin Aldridge, The Dormers, Highworth



TOM JONES

"I bet he drinks
Carling Black Label"



JON GITTENS

Wessex
Conservatories

ROSS MACLAREN

John Tremlin, Coped Hall Service Station
Terry Wollen, Wollens Off Licence
Lynne Stevens, Epping Close, Warminster
Rebecca Vockins, Priory Green, Highworth

ALAN McLOUGHLIN

John Harris, Westcott Place Post Office, Swindon
Alexander Independent Financial Advisors
Keith Chilcott, 34 Ash Walk, Warminster
Sandra Coburn

KEVIN MORRIS

Geoff James of Banbury
Mr Maurice Earle

ADRIAN VIVEASH

Raynor and Sons
Vehicle Dismantlers
Broad Town, Swindon
Tel: Swindon 863715

STEVE FOLEY

Mrs Chilcott, 34 Ash Walk, Warminster
G. Mulcahy, Wills Club, Swindon
R. and J. Warren of Lambourne
Jason and Duncan Malcome of Bulford Village

TONY GALVIN

The Robins Out Of Town

OSSIE ARDILES

Swindon Supporters in London
Contact:
Nick Coote 081-828 1437
Paul Donkersley 081-870 0316
David Moulard 081-347 9845

MICKY HAZARD

Marchants Contract Cleaning
Britannia Life Services (U.K.)

COLIN CALDERWOOD

Mr and Mrs Peet, White Hart, Oare
Mr Tim Barnes, Ashton Keynes
R. and K. Owen, Friesian Close, Swindon
Roland, Nigel and Sam Jones with Peggy Postma

SHAUN CLOSE

Compton Welding, Purton 770742
V.G. Newman, Lea, Malmesbury
John Ward, New Farnley, Leeds
Tudor Carpets, Seymour Road, Swindon
Jefferies D.I.Y., High Street, Highworth

PAUL BODIN

Mr K. P. Emms
Mary Hewer Take Away
Groundwell Road
Swindon

NICKY SUMMERBEE

Sir Seton Wills

DAVID KERSLAKE

Haine & Smith
Opticians
Marlborough, Swindon, Highworth

DUNCAN SHEARER

Bassett Bookmakers

FITZROY SIMPSON

Clare Catering of Oxford

STEVE WHITE

Multisets
For all Computer Stationery
Tel: (0793) 729500

PAUL HUNT

TS TYPESETTING
Typesetters of the official
S.T.F.C. matchday programme
Tel: (0793) 618505

ANDY ROWLAND

R. K. Owen, Friesian Close, Swindon
Chris Weavers, Haydon Court, Swindon
Andrea Pegler and Hilary Mahoney
The Old Vicarage, Kempford

JOHN TROLLOPE

Nationwide Anglia
Building Society



CHIC BATES

Julian Wilson

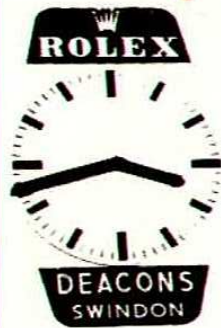
GWR FM 97.2

**FOR SPORT, NEWS, INFORMATION AND
ENTERTAINMENT 24 HOURS A DAY, CALL
THE GWR RADIO LINE ON 0898 333000**

Calls charged at 38p/min peak/25p/min all other times

THE UNBEATABLE TEAM

DEACONS



PLUS



ROLEX

SALES
& SERVICE



DEACONS

(Established 1848)

11-13 WOOD STREET, SWINDON

Tel: 522072 and 527530

23 MARKET PLACE, TETBURY Tel: 52766



Hulford

Motors Ltd

SELF DRIVE HIRE SPECIALISTS
FOR OVER 30 YEARS

CAR & VAN HIRE

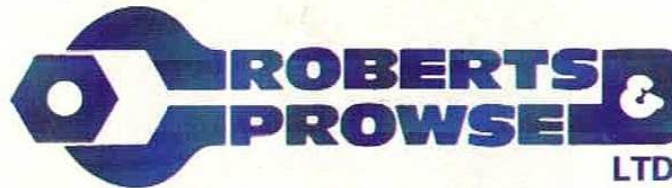


SPECIAL LOW LONG WEEKEND RATES



SHRIVENHAM ROAD, SWINDON

534934 & 524839



SPECIALISTS IN
LTD.

*Process Pipework and Plant, Building Mechanical Services,
Industrial Fabrication, Sheet Metalwork, Combustion Services, Thermal Insulation,
Asbestos Removal, Engineering Merchants, Development Engineers*

THORNHILL, SOUTH MARSTON, SWINDON SN3 4TA.
TELEPHONE (0793) 825505 FACSIMILE (0793) 822642



CASTLE'S

Office and Bakery

4 and 5 MARKET STREET SWINDON

Telephone 522017

Specialists

Wedding Cakes, Birthday Cakes.

Try our Wholemeal Bread and

Wiltshire Lardies and

Delicious Dairy Cream Cakes

ELEGANT

Reproduction Furniture

Luxury . . . you can afford



Qualities to suit all tastes . . .

Prices to suit all pockets . . .

Come and see for yourself at . . .

Howell's

Reproduction Furniture & French Polishing Specialists
52, DEVIZES ROAD, OLD TOWN



Swindon. Tel: 535658



TRANSPLANT

CONSTRUCTION MACHINERY RENTAL



Reading Depot:
Transplant Limited,
Toutley Works, Toutley Road,
Wokingham, Berkshire RG11 5QN
Tel: Reading (0134) 786278
Fax: (0734) 792820

South Coast Depot:
Unit 10, Fort Fareham Ind. Est.,
Newgate Lane, Fareham,
Hampshire PO14 1AH
Tel: Fareham (0329) 822453
Fax: (0329) 822502

Bristol Depot:
Transplant Limited,
Emery Road, Brislington Trd. Est.,
Bristol BS4 5PF Tel: (0272) 779211
Fax: (0272) 711559

Swindon Depot:
Gipsy Lane,
Swindon
Tel: (0793) 542266
Fax: (0793) 731600



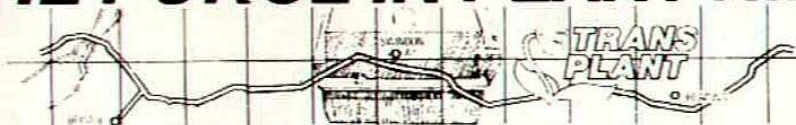
BULK EXCAVATIONS
Six and Eight Wheel
Hinos. Hire on Daywork
or Priced Basis.

**NEW
SOUTH COAST
DEPOT**

POWERED AERIAL ACCESS EQUIPMENT

These items may be hired from any of our depots, but for specialist advice contact our Manager

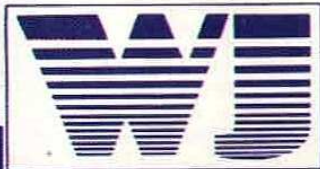
THE FORCE IN PLANT HIRE



Head Office and Accounts Telephone: Swindon (0793) 731741

WALKER JACKSON

**Motoring...
we're on the
ball!**



We're with you all the way!

Car Sales
Fleming Way
Roundabout
Tel: Swindon 20002

Car Service & Parts
Marlborough Road
Tel: Swindon 20002

Commercial Sales Service Parts
Coped Hall, Wootton Bassett
Tel: Swindon 853344



A Member of the Normand Group of Companies

Ten sound reasons for choosing a Wessex Conservatory.

Acknowledged experts: unbeatable quality. 1



6 Clear-Shield easy-clean glass protection.

Sturdy, durable: precision-engineered frame. 2

7 Planned and installed by trained personnel.

Superb choice of single or double glazed. 3



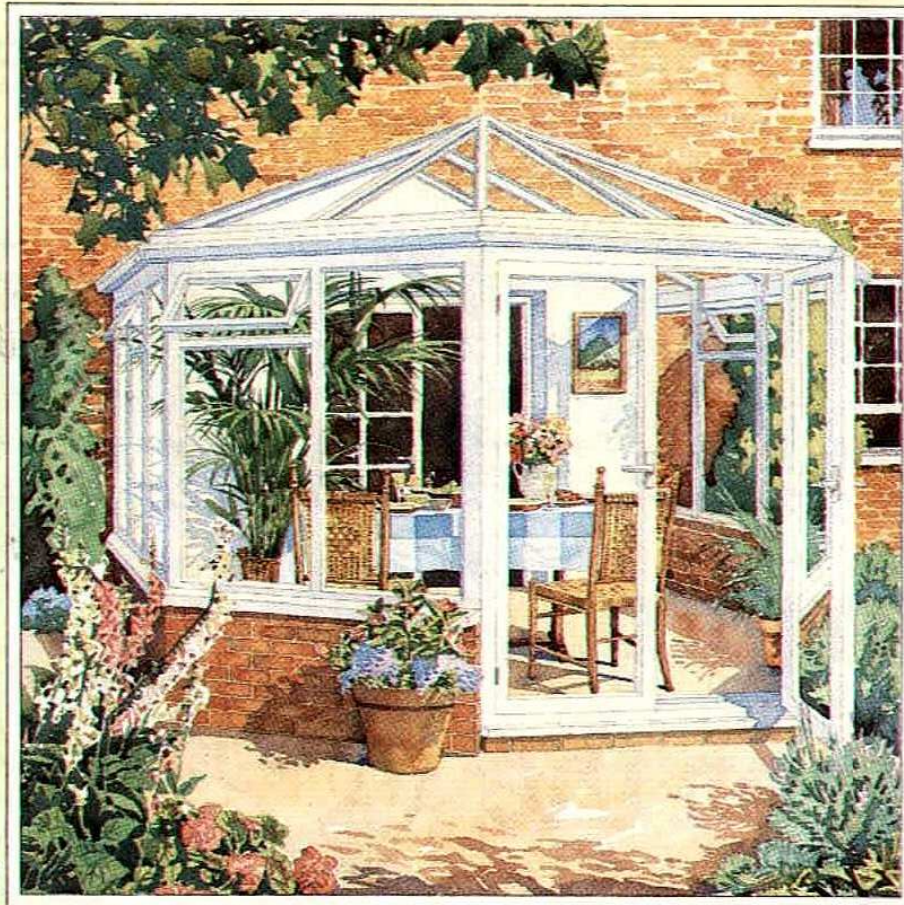
8 Super choice of blinds and other options.

With toughened glass for extra safety. 4

9 Security locks and fittings standard.

Designed just the way you want it. 5

10 Comprehensive 10 year Guarantee.



Available in
Classic White
or Havana Brown.

WESSEX CONSERVATORIES

Founder member of the Conservatory Association.

For free 20 page colour brochure send this coupon to:

Wessex Aluminium Ltd., Hawksworth, Swindon,

Wilts. SN2 1DZ

Or PHONE (0793) 644633

Please send me your FREE 20 page colour brochure
and details of my nearest Wessex dealer.

Name

Address

Phone No. Ref. STFC



Reserves & Youths

SWINDON TOWN FOOTBALL COMBINATION FIXTURES

Wednesday August 29th			
Reading	A	2.00 p.m.	W 5-0
Wednesday September 5th			
Wimbledon	H	7.00 p.m.	D 0-0
Wednesday September 15th			
Arsenal	H	7.00 p.m.	L 1-3
Wednesday September 26th			
Oxford United	A	7.30 p.m.	W 1-0
Saturday October 6th			
Ipswich Town	A	3.00 p.m.	D 1-1
Wednesday October 10th			
Portsmouth	H	7.00 p.m.	
Wednesday October 17th			
Norwich City	H	7.00 p.m.	
Wednesday October 24th			
Watford	H	7.00 p.m.	
Saturday October 27th			
Tottenham Hotspur	A	2.00 p.m.	
Wednesday October 31st			
Ipswich Town	H	7.00 p.m.	
Wednesday November 7th			
Brighton & Hove Albion	H	7.00 p.m.	
Saturday November 10th			
Arsenal	A	3.00 p.m.	
Tuesday November 13th			
Chelsea	A	2.00 p.m.	
Thursday November 22nd			
West Ham United	A	7.00 p.m.	
Wednesday November 28th			
Luton Town	H	7.00 p.m.	
Saturday December 1st			
Southampton	A	2.00 p.m.	
Tuesday December 4th			
Watford	A	7.00 p.m.	
Wednesday December 12th			
Fulham	A	2.00 p.m.	
Wednesday December 19th			
Chelsea	H	7.00 p.m.	
Friday December 28th			
Norwich City	A	7.30 p.m.	
Wednesday January 9th			
Reading	H	7.00 p.m.	
Tuesday January 15th			
Charlton Athletic	A	7.00 p.m.	
Wednesday January 23rd			
Southampton	H	7.00 p.m.	
Wednesday January 30th			
Oxford United	H	7.00 p.m.	
Tuesday February 5th			
Queens Park Rangers	A	2.00 p.m.	
Wednesday February 13th			
Crystal Palace	A	7.30 p.m.	
Wednesday February 20th			
Queens Park Rangers	H	7.00 p.m.	
Wednesday February 27th			
Tottenham Hotspur	H	7.00 p.m.	
Wednesday March 6th			
West Ham United	H	7.00 p.m.	
Saturday March 9th			
Luton Town	A	3.00 p.m.	
Wednesday March 20th			
Fulham	H	7.00 p.m.	
Monday March 25th			
Millwall	A	2.00 p.m.	
Wednesday April 3rd			
Charlton Athletic	H	7.00 p.m.	
Wednesday April 10th			
Crystal Palace	H	7.00 p.m.	
Wednesday April 17th			
Brighton & Hove Albion	A	7.15 p.m.	
Saturday April 20th			
Portsmouth	A	2.00 p.m.	
Wednesday April 24th			
Millwall	H	7.00 p.m.	
Tuesday April 30th			
Wimbledon	A	7.30 p.m.	

SOUTH EAST COUNTIES LEAGUE FIXTURE LIST 1990-91

Saturday August 25th			
Brighton & Hove Albion	A		W 3-2
Saturday September 1st			
Bristol Rovers	H		L 1-7
Saturday September 8th			
Luton Town	A		W 3-2
Saturday September 15th			
Southampton	League Cup 1	A	L 1-2
Saturday September 22nd			
Southampton	A		D 1-1
Monday September 24th			
Colchester	(SJFC) H		D 2-2
Saturday September 29th			
Crystal Palace	H		W 6-4
Monday October 1st			
Colchester United	(SJFC) A		L 0-1
Saturday October 13th			
Maidstone United	H		
Saturday October 20th			
Reading	H		
Saturday October 27th			
Reading	A		
Saturday November 3rd			
Oxford United	H		
Saturday November 10th			
Wimbledon	A		
Saturday November 17th			
Aldershot	H		
Saturday November 24th			
Tottenham Hotspur	H		
Saturday December 1st			
A.F.C. Bournemouth	H		
Saturday December 8th			
Bristol City	H		
Saturday December 15th			
League Cup 3			
Saturday December 22nd			
Brentford	A		
Saturday January 5th			
Brighton & Hove Albion	H		
Saturday January 12th			
Bristol Rovers	A		
Saturday January 19th			
Southampton	H		
Saturday February 2nd			
Crystal Palace	A		
Saturday February 16th			
Maidstone United	A		
Saturday March 2nd			
Oxford United	A		
Saturday March 9th			
Wimbledon	H		
Saturday March 16th			
Aldershot	A		
Saturday March 23rd			
Tottenham Hotspur	A		
Saturday March 30th			
A.F.C. Bournemouth	A		
Saturday April 6th			
Bristol City	A		
Saturday April 13th			
Brentford	H		

Statistics

GOALOMETER



Swindon Town F.C. would like to thank the firms and individuals opposite for sponsoring every first team goal scored in competitive matches during season 1990/91.

SPONSORED GOALS

Lovatt Heating, Cirencester
 Abbey Road Garage, Cirencester
 M.S. Group, Swindon
 Clare Catering of Oxford
 Keith Lodge Industrial Roofing
 Metalite Engineering
 The Riverway Wine Company,
 Trowbridge
 Swindon Calor Gas Centre, Swindon
 Roy Allen Supplies, Swindon
 Brunel Scaffolding, Swindon
 Regal Windows, Swindon
 Skurrays, Drove Road, Swindon
 Thamesdown Cleaning Services,
 Swindon
 Multi Agg Quarries, Shellingford
 Les Smith Haulage, Swindon
 Moores Cars, Faringdon
 Carling Black Label
 Blunsdon House Hotel, Swindon
 Starlight Private Hire Cars, Swindon
 Western Daily Press
 Ashtons Auto's, Swindon
 Hammond Construction, Highworth
 High Close Soft Fruit, Hungerford
 Fisher Roofing, Link House,
 Highworth
 Biplob Tandoori Restaurants
 Swindon, Rodbourne, Highworth
 S. Coburn

BARCLAYS LEAGUE DIVISION TWO 1990/91

	P	W	D	L	F	A	Pts
Oldham Athletic	10	7	3	0	1	7	24
Sheffield W.	9	7	2	0	22	6	23
West Ham Utd.	10	5	2	0	19	7	20
Millwall	9	5	4	0	18	8	19
Notts County	9	6	0	3	17	12	18
Wolves	10	4	4	2	18	10	16
Barnsley	9	5	1	3	18	13	16
Middlesbrough	9	4	3	2	15	6	15
Newcastle	9	4	3	2	10	7	15
Swindon Town	10	4	3	3	15	14	15
Brighton & H.A.	9	4	2	3	15	18	14
Bristol City	8	4	1	3	11	13	13
Ipswich Town	10	3	3	4	10	16	12
Port Vale	10	3	2	5	16	17	11
Plymouth	10	2	5	3	11	13	11
Blackburn Rovers	10	3	1	6	16	18	10
Hull City	10	2	4	4	14	24	10
West Bromwich	8	2	3	3	9	12	9
Leicester City	10	3	0	7	12	25	9
Portsmouth	10	2	2	6	15	21	8
Charlton Athletic	9	1	3	5	8	14	6
Bristol Rovers	8	1	2	5	10	14	5
Oxford United	9	1	2	6	12	23	5
Watford	9	0	2	7	4	15	2



HELPING THE GAME



The Football Trust 1990 has been created to help the game at all levels and to assist clubs meet the requirements of Lord Justice Taylor's Final Report.

Safety and comfort for all spectators is the primary objective and substantial funds have been made available for the provision of seating at Football League grounds. At the same time the Trust's commitment to family and community initiatives will continue with the provision of more family enclosures, better toilet facilities, covered accommodation, artificial pitches for local use and the development of women's and junior football particularly through community programmes, plus a wide range of policing and crowd control measures.

Each year The Trust expects to receive £20 million from the reduction in Pool Betting Duty plus the £10 million continuing contribution from the Spotting-the-Ball competition organised by Littlewoods, Vernons and Zettors. This money will be invested in projects which benefit football throughout the United Kingdom.

BARCLAYS LEAGUE FIXTURES
DIVISION TWO 1990/91

					Digby	Kerslake	Bodin	Simpson	Calderwood	Gittens	Jones	Shearer	Close	MacLaren	Foley	Hockaday	McLoughlin	Summerbee	Buttigieg	Viveash	Hunt	White	Bennett	Tanner	Hazard	Hammond
Sat	Aug. 25	Charlton Athletic	2-1	7,542	1	2	3●	4	5	6	7	8●	9†	10	11	12†	14	-	-	-	-	-	-	-	-	-
Tues.	Aug. 28	Ipswich	1-0	10,817	1	2	3	4	5	6	7†	8●	9	10	11	12	14†	-	-	-	-	-	-	-	-	-
Sun.	Sept. 2	Bristol City	0-1	12,254	1	2	3	4	5	6	7†	8	9*	10	11	12†	14*	-	-	-	-	-	-	-	-	-
Sat.	Sept. 8	Hull City	1-1	5,240	1	-	3	14†	5	6	7	8	9*	10	11†	2	4●	12*	-	-	-	-	-	-	-	-
Sat.	Sept. 15	Middlesbrough	1-3	9,127	1	-	3	9	5	6	7	8●	-	10	11	-	4	12*	2	14††	-	-	-	-	-	-
Tues.	Sept. 18	Wolverhampton W.	1-0	12,288	1	-	3	9●	5†	6	7	8●	-	10	11	-	4	14	2	-	12†	-	-	-	-	-
Sat.	Sept. 22	Oxford United	4-2	7,961	1	2	3	9●	-	6	7	8●●	-	10	11	-	4*	-	14*	-	-	12†	5†	-	-	-
Tues.	Sept. 25	Darlington (LC R2)	0-3	4,037	1	2	3	9	-	6	7	8	-	10	11*	-	4	-	14*	-	-	12†	5†	-	-	-
Sun.	Sept. 30	Millwall	0-0	11,667	1	2	3	9*	-	6	7†	8	-	10	11*	-	4	-	-	-	-	12*	-	5	14†	-
Tues.	Oct. 2	Oldham Athletic	2-3	12,575	1	2	3●	9	-	6	-	8	12*	10	-	-	4*	-	-	14	-	11	-	5	7●	-
Sat.	Oct. 6	Brighton & H.A.	3-3	7,940	1	2	3	11	-	6	-	8	12	10	-	-	4●●	-	-	14	-	9●	-	5	7	-
Tues.	Oct. 9	Darlington (LC R2)	4-0	7,066	2	3	11●	-	6†	-	-	8●●	10	14†	-	4●*	-	-	5	12*	9	-	-	7	†	
Sat.	Oct. 13	Bristol Rovers																								
Sat.	Oct. 20	West Ham United																								
Wed.	Oct. 24	Leicester City																								
Sat.	Oct. 27	Barnsley																								
Wed.	Oct. 31	Sheffield Wednesday																								
Sat.	Nov. 3	Port Vale																								
Sat.	Nov. 10	Portsmouth																								
Sat.	Nov. 17	Sheffield W. (FAC1)																								
Sat.	Nov. 24	Notts County																								
Wed.	Nov. 28	League Cup R4																								
Sat.	Dec. 1	Blackburn Rovers																								
Sat.	Dec. 8	Ipswich T. (FAC2)																								
Sat.	Dec. 15	Charlton Athletic																								
Sat.	Dec. 22	West Bromwich A.																								
Wed.	Dec. 26	Newcastle United																								
Sat.	Dec. 29	Watford																								
Tues.	Jan. 1	Plymouth Argyle																								
Sat.	Jan. 5	F.A. Cup R3																								
Sat.	Jan. 12	Bristol City																								
Wed.	Jan. 16	League Cup R5																								
Sat.	Jan. 19	Hull City																								
Sat.	Jan. 26	F.A. Cup R4																								
Sat.	Feb. 2	Middlesbrough																								
Sat.	Feb. 9	Oxford United																								
Tues.	Feb. 12	Wolverhampton W.																								
Wed.	Feb. 13	League Cup S.F. L1																								
Sat.	Feb. 16	Sheffield W. (FAC5)																								
Sat.	Feb. 23	Portsmouth																								
Wed.	Feb. 27	League Cup S.F. L2																								
Sat.	Mar. 2	Blackburn Rovers																								
Sat.	Mar. 9	Notts. County																								
Tues.	Mar. 12	Oldham Athletic																								
Sat.	Mar. 16	Millwall																								
Wed.	Mar. 20	Bristol Rovers																								
Sat.	Mar. 23	Brighton & H.A.																								
Sat.	Mar. 30	Newcastle United																								
Mon.	Apr. 1	West Bromwich A.																								
Sat.	Apr. 6	Watford																								
Sat.	Apr. 13	Plym'th A (FACSF)																								
Sat.	Apr. 20	West Ham United																								
Sun.	Apr. 21	League Cup Final																								
Sat.	Apr. 27	Leicester City																								
Sat.	May 4	Barnsley																								
Sat.	May 11	Port Vale																								
Sat.	May 18	F.A. Cup Final																								

ZENITH DATA SYSTEMS CUP 2nd ROUND

Chelsea v Swindon Town at Stamford Bridge

Wednesday December 17th, Kick-Off 7.30 p.m.

Ticket information to follow.

This tie has been brought forward one week by mutual agreement of both clubs.

NEXT INTERNATIONAL European Nations Group Match England v Poland Wembley Stadium

Wednesday 17th October 1990, Kick-Off 7.45 p.m.

Advance Ticket Reservations ring 081-900 1234

Key: Home matches in bold ● Goalscorer † and * Substitutions



WARNING TV SURVEILLANCE

This ground is equipped with
**CLOSED CIRCUIT
TELEVISION**

Installed with the help of a grant from the Football Trust. It is there to increase crowd safety and to help the police. Recording facilities enable film and photographs to be taken of disorder, which may subsequently be used in a court of law.

The Football Trust is funded entirely by the pools companies Littlewoods, Vernons and Zetters from their Spotting-the-Ball competition.

SPALL SPORTSWEAR LIMITED

Official Suppliers to Swindon Town
F.C. and Many Other Leading League
Clubs

DO CALL AND SEE DOUG WOODMAN AND
VIEW THE LARGE RANGE OF FOOTBALL
AND OTHER SPORTS GOODS AVAILABLE
FROM THE OFFICIAL CLUB SHOP.
OPEN 9.00 to 12.00 2.00 to 5.00 DAILY

SWINDON TOWN

BRISTOL ROVERS



NICKY HAMMOND



BRIAN PARKING



DAVID KERSLAKE



IAN ALEXANDER



PAUL BODIN



JEFF TWENTYMAN



ALAN McLOUGHLIN



STEVE YATES



ADRIAN VIVEASH



DAVID MEHEW



JON GITTENS



VAUGHAN JONES



MICKY HAZARD



IAN HOLLOWAY



SHAUN CLOSE



ANDY REECE



STEVE WHITE



DEVON WHITE



ROSS MacLAREN



PAUL NIXON



FITZROY SIMPSON



TONY POUNDER



12. TON JONES
14. STEVE FOLEY



12. CHRISTIAN McLEAN
14. PHIL PURNELL



Referee: J. B. Worrall



Linesman Red Trim: M. D. Dearing
Linesman Yellow Trim: C. J. Henderson

NEXT HOME MATCH: Swindon Town v West Ham United
Saturday October 20th 1990. Kick-Off 3.00 p.m.

TODAY'S MATCH SPONSOR:

Roy Allen Supplies

TODAY'S BALL SPONSOR:
Hammond Construction, Highworth

TODAY'S MASCOT

ROBERT SPOUR is eight years old attends Chiseldon Primary School. His favourite team is Swindon Town and his favourite players are Alan McLoughlin and Steve Foley.



IMPORTANT SAFETY NOTICE
IMPORTANT SAFETY ANNOUNCEMENTS BY THE CLUB MANAGEMENT OVER THE PUBLIC ADDRESS SYSTEM WILL BE PRECEDED BY A LOUD SIGNAL TO CATCH THE ATTENTION OF SPECTATORS.